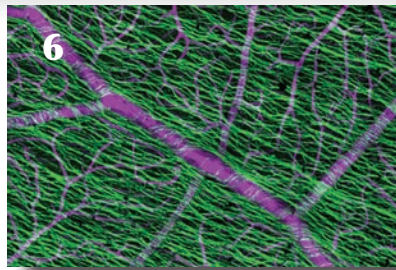
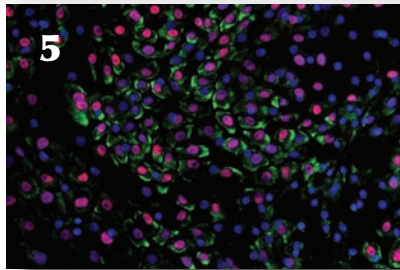


“Lions Gift of Sight provides excellent service in supplying eye tissue for research along with exceptional fundus photographs.”

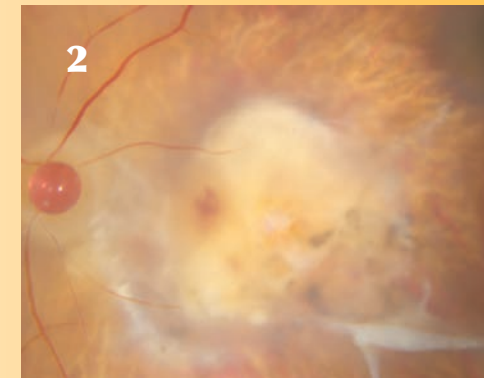
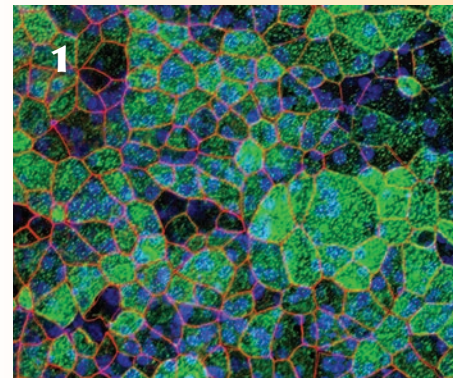
Deborah A. Ferrington, Ph.D.
Professor and Director of Research
Distinguished McKnight University Professor
Elaine and Robert Larson Endowed Vision Research Chair
Department of Ophthalmology & Visual Neurosciences



Images pictured in this brochure came from the work of Lions Gift of Sight staff members and their research collaborators.

1. H. Roeblich, Histology Core for Vision Research, University of Minnesota: Immunostained RPE cells derived from iPSC cells.
2. S. Lee, Lions Gift of Sight, University of Minnesota: Fundus photo of AMD. Scar size calibrated using the Minnesota grading scale (red bead).
3. Dr. Michael Fautsch's Laboratory, Mayo Clinic, Department of Ophthalmology: Immunostained cultured trabecular meshwork cells.
4. Histology Service, Lions Gift of Sight, H&E staining of drusen deposits in AMD donor eyes.
5. P. Bedard, J. Hou, Lions Gift of Sight / University of Minnesota: Immunostained limbal explant cultures.
6. M. Darche, M. Paques, 15-20 Hospital / Institut de la Vision, France: Immunostained retinal microvascular network.

Your Partners in Customized Eye Research

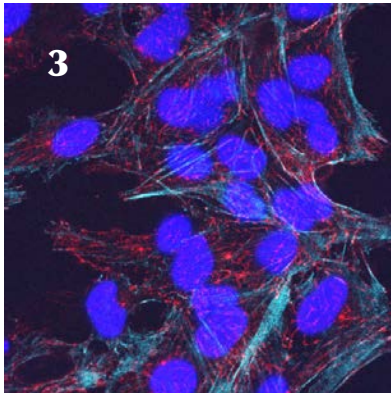


- Disease-Specific Tissue / Cells
- Customized Processing & Imaging
- Speciality Procurement for RNA / Protein Preservation

Lions Gift of Sight is part of the University of Minnesota's Department of Ophthalmology and Visual Neurosciences and is supported by the Minnesota Lions Vision Foundation. Thanks to eye donors, Lions Gift of Sight has been advancing research and restoring sight for more than 59 years.

Recognized by Industry & Academic Partners

- More than 60 years of experience
- More than 40,000 research/training tissues distributed
- Top 5 eye bank in distributing eye tissue for research & education



Custom Processing & Imaging

- Whole Eye Dissection
- Retina/RPE/Choroid Punches
- Fundus Imaging/OCT Imaging
- Embedding (Paraffin, OCT Compound)
- Sectioning
- Staining (H&E, DAB, Immunofluorescence)

Specialty Procurement

- Disease-specific tissues procured include but not limited to:
 - AMD
 - Diabetic Retinopathy
 - Glaucoma
 - Fuchs' dystrophy
 - Alzheimer's/Parkinson's disease
 - Diabetic Macular Edema
 - Cancer-Specific Donor Screening
 - Project-Specific Donor Screening
- On-site preservation / fixation of samples

“ We really appreciate the histological support from Lions Gift of Sight. Their service is efficient, high quality, and provides great support for my research projects.

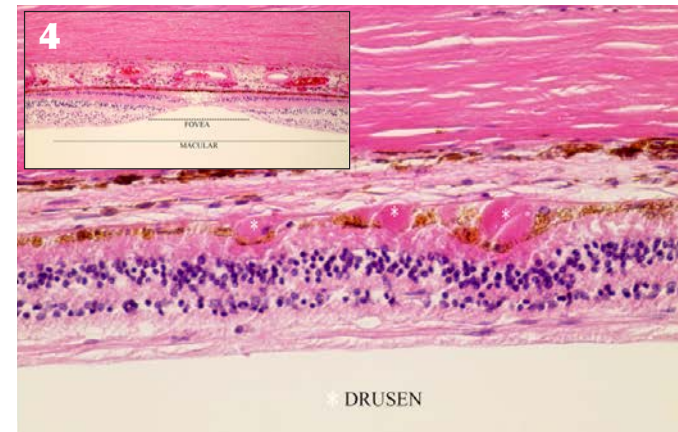
Jian-xing (Jay) Ma, M.D., Ph.D., Chairman, Department of Physiology,
Director for Research, Harold Hamm Diabetes Center
University of Oklahoma Health Sciences Center

Tissues and Cells

- Whole Globes
- Posterior Globes
- Corneas
- Aqueous Humor
- Vitreous Humor
- Trabecular Meshwork
- Retina
- Ocular Muscles
- Retinal Pigment Epithelium (RPE) / Choroid
- Optic Disc / Nerve
- Conjunctiva
- Trabecular Meshwork Cells
- Cornea Cells (Epithelial Cells / Limbal Stem Cells / Endothelial Cells)
- RPE Cells

“ The experienced staff of Lions Gift of Sight has been attentive to our tissue requests, timely in providing postmortem-to-preservation and preservation-to-delivery times. We consider Lions Gift of Sight an indispensable resource for our research.

Bradley D. Gelfand, Ph.D., Assistant Professor, Ophthalmology
Center for Advanced Vision Science, University of Virginia



For more information:

Email: LGS-Research@umn.edu

Phone: 612-625-5159

Website: LionsGiftofSight.org/researchers