



formerly Minnesota Lions Eye Bank

Additional Instructions for DMEK-Prepared Tissue

This sheet supplements Lions Gift of Sight Ocular Tissue Package Insert L1.000 Attachment I but does not replace the standard precautions.

This cornea has been processed with a modified SCUBA method. The graft will have a diameter of 8 – 10.5 mm, unless otherwise requested. The Descemet's membrane (DM) was scored 360° near the limbus. The majority of the DM was manually peeled away from the stroma, leaving a small hinge area not peeled. The hinge location is designated by a scleral wedge.

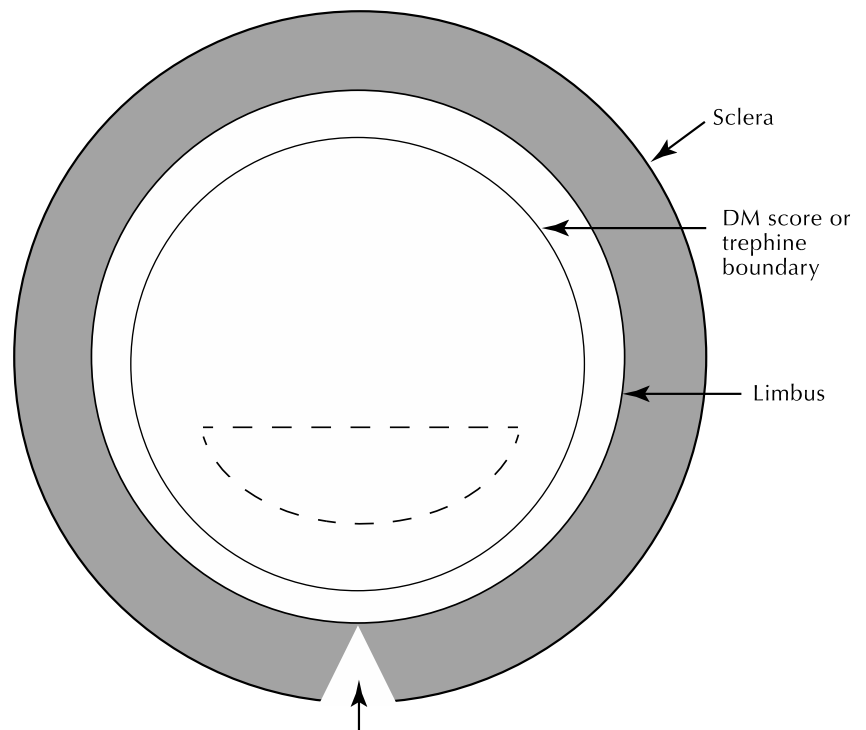
The reported graft size is the largest diameter circle of DM that can be trephined from the scored area, excluding any significant endothelial defects.

The separated DM was carefully laid back onto its natural position on the stroma. The DM may shift during shipping and become partially detached. If this has happened, use corneal storage solution and sterile eye spears to reset the graft on the stroma and to remove fluid from the interface.

Add 0.06% trypan blue ophthalmic solution to visualize graft before trephination.

Take care to trephine the graft completely through the DM while limiting the depth of penetration into the stroma. **After trephination, remove the annulus around the graft.**

Once the trephination is complete, grasp the DM graft 180° opposite the hinge. Pull graft towards the scleral wedge, and very carefully peel the DM at the hinge to complete the separation of the DM from the stroma. **Use extreme caution when performing the hinge separation to prevent any tearing of the extremely thin, delicate graft.**



Posterior View. Scleral wedge indicates location of hinge, where DM is attached to posterior stroma (attached area shown by dotted line).